

---

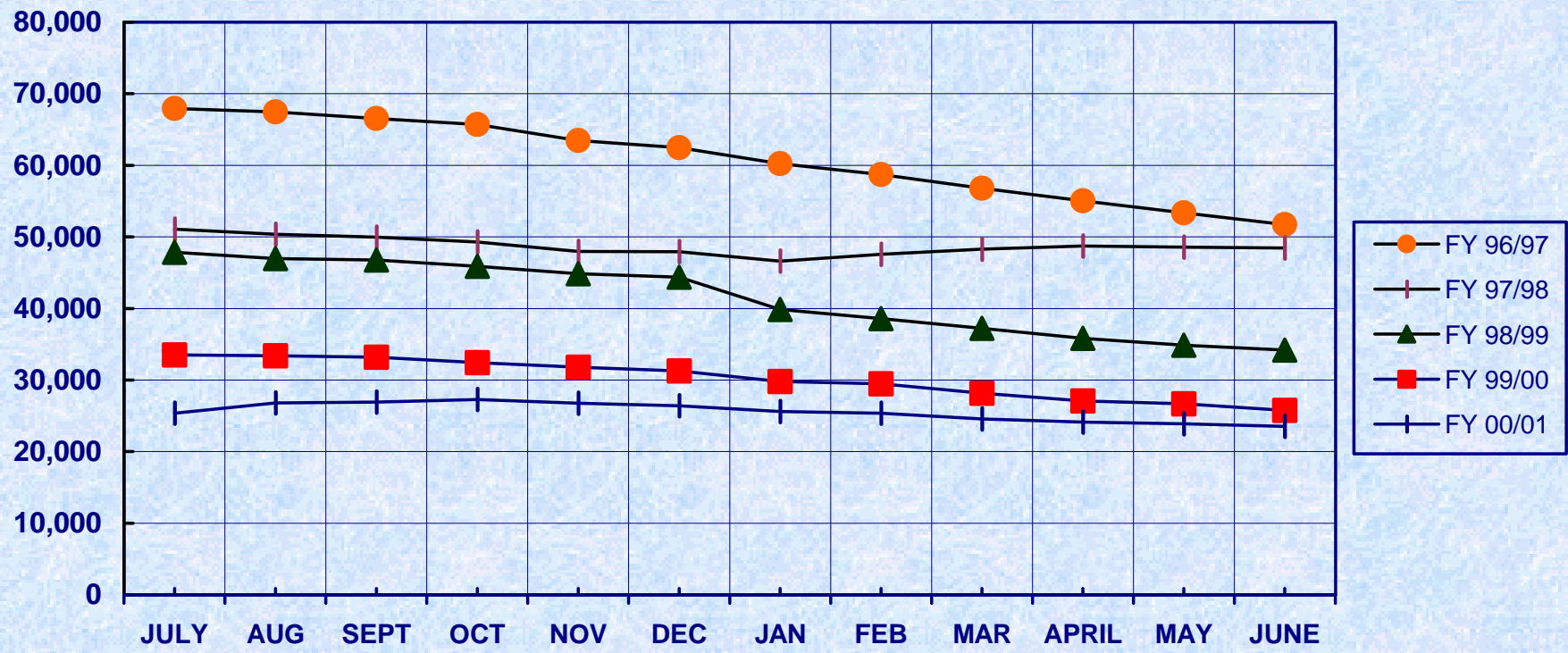
# **FITAP CASES BY FISCAL YEAR**

---

## **STATEWIDE MONTHLY TOTALS**

<b>MONTH</b>	<b>FY 96/97</b>	<b>FY 97/98</b>	<b>FY 98/99</b>	<b>FY 99/00</b>	<b>FY 00/01</b>
<b>JULY</b>	<b>67,932</b>	<b>51,081</b>	<b>47,838</b>	<b>33,498</b>	<b>25,379</b>
<b>AUG</b>	<b>67,467</b>	<b>50,349</b>	<b>46,968</b>	<b>33,408</b>	<b>26,791</b>
<b>SEPT</b>	<b>66,542</b>	<b>49,951</b>	<b>46,760</b>	<b>33,195</b>	<b>26,916</b>
<b>OCT</b>	<b>65,714</b>	<b>49,275</b>	<b>45,887</b>	<b>32,416</b>	<b>27,266</b>
<b>NOV</b>	<b>63,467</b>	<b>47,987</b>	<b>44,853</b>	<b>31,809</b>	<b>26,743</b>
<b>DEC</b>	<b>62,483</b>	<b>47,919</b>	<b>44,377</b>	<b>31,290</b>	<b>26,405</b>
<b>JAN</b>	<b>60,226</b>	<b>46,593</b>	<b>39,877</b>	<b>29,799</b>	<b>25,608</b>
<b>FEB</b>	<b>58,709</b>	<b>47,580</b>	<b>38,582</b>	<b>29,469</b>	<b>25,359</b>
<b>MAR</b>	<b>56,808</b>	<b>48,274</b>	<b>37,217</b>	<b>28,160</b>	<b>24,548</b>
<b>APRIL</b>	<b>55,048</b>	<b>48,722</b>	<b>35,810</b>	<b>27,071</b>	<b>24,109</b>
<b>MAY</b>	<b>53,365</b>	<b>48,585</b>	<b>34,850</b>	<b>26,699</b>	<b>23,892</b>
<b>JUNE</b>	<b>51,723</b>	<b>48,441</b>	<b>34,178</b>	<b>25,779</b>	<b>23,521</b>
<b>Average</b>	<b>60,790</b>	<b>48,730</b>	<b>41,433</b>	<b>30,216</b>	<b>25,545</b>
<b>Total</b>	<b>729,484</b>	<b>584,757</b>	<b>497,197</b>	<b>362,593</b>	<b>306,537</b>

### FITAP CASES BY FISCAL YEAR STATEWIDE MONTHLY TOTALS



---

# **FITAP RECIPIENTS BY FISCAL YEAR**

---

## **STATEWIDE MONTHLY TOTALS**

<b>MONTH</b>	<b>FY 96/97</b>	<b>FY 97/98</b>	<b>FY 98/99</b>	<b>FY 99/00</b>	<b>FY 00/01</b>
<b>JULY</b>	<b>229,233</b>	<b>178,335</b>	<b>124,658</b>	<b>82,935</b>	<b>59,699</b>
<b>AUG</b>	<b>228,115</b>	<b>129,273</b>	<b>122,562</b>	<b>82,633</b>	<b>63,646</b>
<b>SEPT</b>	<b>225,498</b>	<b>127,752</b>	<b>121,772</b>	<b>81,307</b>	<b>63,994</b>
<b>OCT</b>	<b>223,484</b>	<b>125,507</b>	<b>118,909</b>	<b>79,055</b>	<b>64,356</b>
<b>NOV</b>	<b>216,339</b>	<b>122,333</b>	<b>116,084</b>	<b>77,269</b>	<b>60,182</b>
<b>DEC</b>	<b>213,551</b>	<b>121,639</b>	<b>114,429</b>	<b>75,571</b>	<b>59,515</b>
<b>JAN</b>	<b>206,582</b>	<b>118,404</b>	<b>101,592</b>	<b>71,601</b>	<b>57,319</b>
<b>FEB</b>	<b>201,969</b>	<b>121,252</b>	<b>97,609</b>	<b>70,103</b>	<b>56,316</b>
<b>MAR</b>	<b>195,936</b>	<b>124,031</b>	<b>93,471</b>	<b>66,288</b>	<b>53,865</b>
<b>APRIL</b>	<b>190,383</b>	<b>125,730</b>	<b>89,438</b>	<b>63,442</b>	<b>52,769</b>
<b>MAY</b>	<b>184,997</b>	<b>125,622</b>	<b>86,575</b>	<b>62,499</b>	<b>52,143</b>
<b>JUNE</b>	<b>179,868</b>	<b>125,805</b>	<b>84,497</b>	<b>60,227</b>	<b>51,457</b>
<b>Average</b>	<b>207,996</b>	<b>128,807</b>	<b>105,966</b>	<b>72,744</b>	<b>57,938</b>
<b>Actual</b>	<b>2,495,955</b>	<b>1,545,683</b>	<b>1,271,596</b>	<b>872,930</b>	<b>695,261</b>

FITAP RECIPIENTS BY STATE FISCAL YEAR  
STATEWIDE MONTHLY TOTALS

